

# Solenoid Specifications



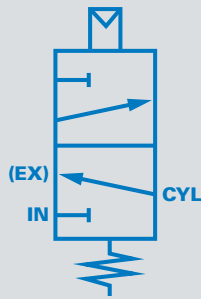
## SOLENOID OPERATED PNEUMATIC DIRECTIONAL CONTROL VALVES

Pacbrake offers various vacuum and air solenoid configurations to meet any specialty requirement or mounting location. Our engineered commercial-duty and severe-duty solenoids have been exposed to some of the toughest testing grounds the world has to offer.

Pacbrake's experience designing cost effective hydraulic and pneumatic solenoids with demanding requirements has equipped Pacbrake with the experience to integrate solenoid controls into any application.

### 3-WAY, 2-POSITION

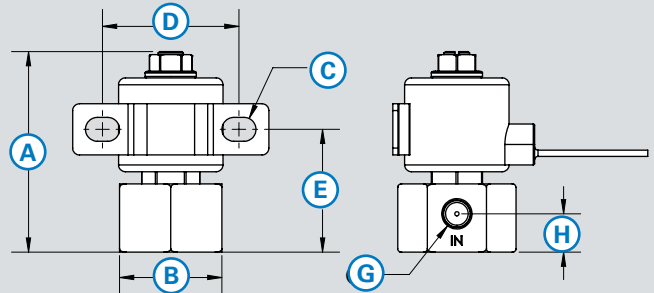
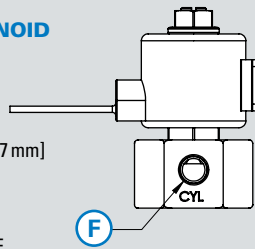
- 'IN' port normally closed
- 'CYL' port normally open to exhaust (atmosphere)
- 18" [457 mm] long 18 AWG wire leads
- Anodized aluminum valve body
- Zinc chromate plated carbon steel solenoid body



SPECIFICATIONS	
<b>WORKING TEMPERATURE RANGE:</b>	-40°F to 185°F [-40°C to 85°C]
<b>MAXIMUM WORKING PRESSURE:</b>	0 psi to 150 psi [0 kPa to 1034 kPa]
<b>ORIFICE SIZE:</b>	3/32" x 2 [2.38 mm x 2]



**C11935 PNEUMATIC SOLENOID**  
**Voltage Range:** 12 VDC\*  
**Coil Resistance:** 10 Ω  
**A:** 2.91" [74.0 mm]  
**B (Hex):** 1.50" [38.1 mm]  
**C:** .35" X .50" [8.9mm X 12.7 mm]  
**D:** 2.00" [50.8 mm]  
**E:** 1.8" [45.7 mm]  
**F (Port):** 1/8"-27 (-2) NPTF  
**G (Port):** 1/8"-27 (-2) NPTF  
**H:** .563" [14.3 mm]



\*Also available in 24VDC part #: C11979

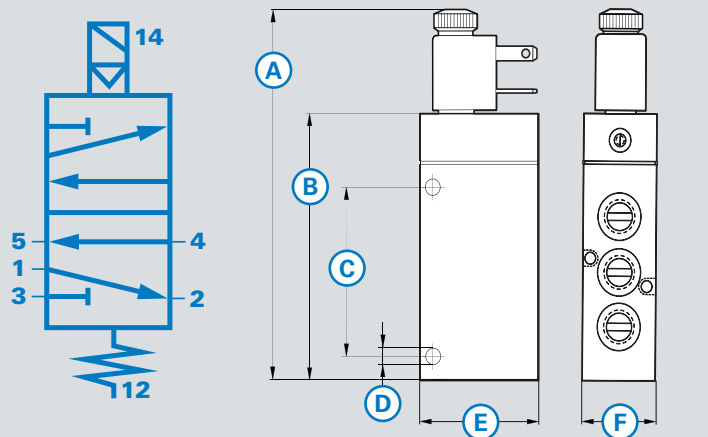
### 5/2-WAY SOLENOID VALVE

- Single solenoid with spring return
- Continuous duty cycle
- IP65 to DIN 40050 with plug protection

SPECIFICATIONS	
<b>AMBIENT TEMPERATURE RANGE:</b>	14°F to 140°F [-10°C to 60°C]
<b>MAXIMUM WORKING PRESSURE:</b>	29 psi to 145 psi [2 bar to 10 bar]
<b>FLOW CV:</b>	0.5 l [500 min]



**C10560 5/2 WAY SOLENOID VALVE**  
**Voltage Range:** 12 VDC  
**Weight:** 0.62 lbs [0.28 kg]  
**A:** 5.04" [128 mm]  
**B:** 3.44" [87.5 mm]  
**C:** 2.19" [55.5 mm]  
**D:** 0.22" [5.5 mm]  
**E:** 1.57" [40 mm]  
**F:** 0.87" [22 mm]  
**Port:** 1/8" (-2) NPT



### 3-WAY, 2-POSITION

- Direct acting, spring return
- Inlet – normally closed, Cyl – normally open to vent (atmosphere)
- 1/4" (-4) NPT IN and CYL port
- 6" [152 mm] long 18 AWG (UL 3173) pigtail
- Brass solenoid base
- Zinc chromate plated carbon steel solenoid body
- 1N4006 internal suppression diode
- NEMA 1 Protection

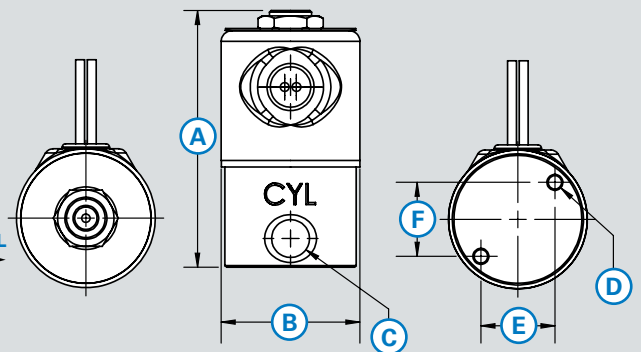
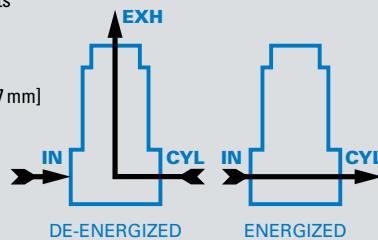
SPECIFICATIONS	
<b>WORKING TEMPERATURE RANGE:</b>	-40°F to 248°F [-40°C to 120°C]
<b>MAXIMUM WORKING PRESSURE:</b>	0 psi to 135 psi [0 kPa to 931 kPa]
<b>FLOW RATE</b>	Cv 0.18
<b>PROOF PRESSURE:</b>	500 psi [3448 kPa]
<b>BURST PRESSURE:</b>	6000 psi [41369 kPa]
<b>ORIFICE SIZE:</b>	3/32" x 2 [1.52+/-0.08 mm 2.38 mm x 2]
<b>MAX FREQUENCY:</b>	300 Cpm
<b>RESPONSE TIME:</b>	5-15 ms



#### C10611

##### HEAVY DUTY SOLENOID

**Voltage Range:** 24 VDC  
**Coil Resistance:** 36 to 45 Ω  
**Max Power:** 14 Watts  
**A:** 3.05" [77.5 mm]  
**B:** 1.56" [39.6 mm]  
**C:** 1/4" (-4) NPT x 2  
**D:** 10-32 UNF .38" [9.7 mm]  
**E:** .88" [22.4 mm]  
**F:** .88" [22.4 mm]



### 4-WAY, 2-POSITION

- 6 Watt
- .5 Amps current holding
- Spring return with flush non-locking override
- 1/8" (-2) NPTF
- Lubricant free assembly
- Loctite applied to fasteners
- Energize time: 0.012 ms
- De-energize time: 0.006 sec
- Designed to meet NEMA 4/IP65
- Flow capacity: 197 NI/m @ 6 bar upstream /5 bar downstream atmosphere [9.3 SCM @ 80 psig upstream /atmosphere downstream]
- 15" [457 mm] long 18 AWG pigtail

SPECIFICATIONS	
<b>WORKING TEMPERATURE RANGE:</b>	-40°F to 185°F [-40°C to 85°C]
<b>WORKING PRESSURE:</b>	28" Hg to 150 psig [Vacuum to 10 bar]
<b>FLOW RATE:</b>	Cv 0.20



#### C11829

##### LIGHT DUTY SOLENOID

**Voltage Range:** 12 VDC  
**Coil Resistance:** 25 Ω  
**A:** 3.14" [79.8 mm]  
**B:** 1.19" [30.2 mm]  
**C:** 0.90" [22.9 mm]  
**D:** 1/8" (-2) NPTF x 4  
**E:** 0.31" x 4 [7.9 mm x 4]  
**F:** 0.11" x 3 [2.8 mm x 3] Thru  
**G:** 0.97" [24.6 mm]

