

# **P-80A**

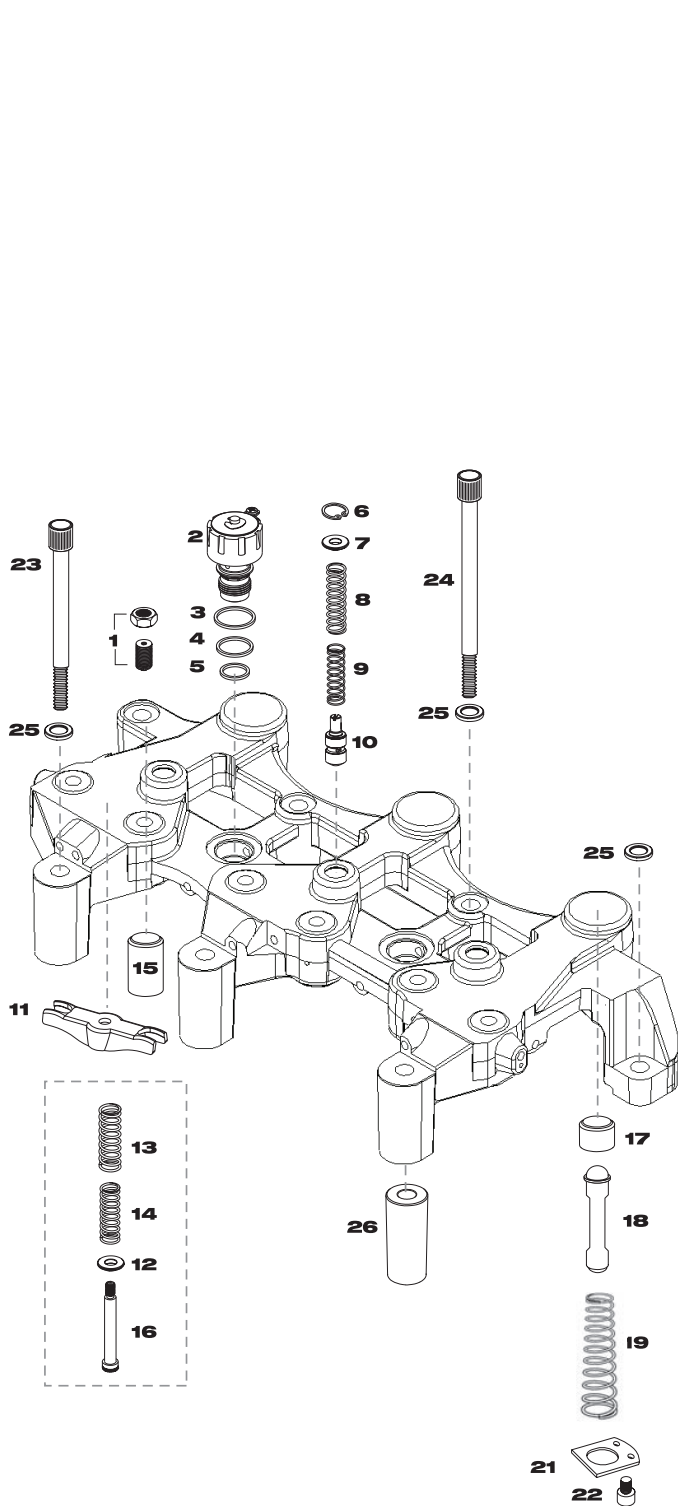
## **ENGINE BRAKE PARTS GUIDE**

**APPLICATION | DETROIT DIESEL SERIES 60 MY2000 12.7L / 14L ENGINES**  
WITH INJECTOR SETTING 82.1MM ONLY



# P-80A - P80006 FRONT HOUSING ASSEMBLY

# P-80A - P80007 REAR HOUSING ASSEMBLY



**NOTE:** THE SLAVE PISTON RETURN SPRING ASSEMBLY SHOWN IN THE DOTTED AREA IS COMPATIBLE WITH THE NEW DETROIT DIESEL INJECTOR. P-80A PARTS USED PRIOR TO THE INTRODUCTION OF THE NEW DDC INJECTOR ARE OBSOLETE. TO PREVENT MISAPPLICATION, THESE PARTS SHOULD BE CHANGED AS AN ASSEMBLY ONLY. P80034 INJECTOR KIT CONTAINS ENOUGH PARTS TO RETRO-FIT BOTH THE FRONT AND REAR HOUSINGS.

SEE SERVICE BULLETIN #154

HOUSING SERIAL NUMBER 92905 AND GREATER ARE COMPATIBLE WITH THE NEW INJECTOR.

#	PART #	DESCRIPTION	QUANTITY	
			FRONT	REAR
1	P80035	ADJUSTING SCREW AND NUT, SOLID 3/8" NC	6	6
2	P04205	SOLENOID-12VOLT	2	1
3	P01081	SOLENOID SEAL-UPPER	2	1
4	P01082	SOLENOID SEAL-CENTER	2	1
5	P01083	SOLENOID SEAL-LOWER	2	1
6	P15561	SNAP RING	3	3
7	P38015	WASHER	3	3
8	P11434	OUTER CONTROL VALVE SPRING, WHITE	3	3
9	P11435	INNER CONTROL VALVE SPRING, NATURAL	3	3
10	P01500	CONTROL VALVE	3	3
11	P60070	SLAVE PISTON BRIDGE	3	3
12	P80088	SPRING RETAINER	6	6
13	P80090	OUTER BRIDGE SPRING	3	3
14	P80089	INNER BRIDGE SPRING	3	3
15	P80011	SLAVE PISTON-7/8" O.D.	6	6
16	P80087	SHOULDER BOLT-5/16 X 1.5	3	3
17	P80018	MASTER PISTON-1" O.D.	3	3
18	P80033	MASTER LINK	3	3
19	P80031	MASTER LINK SPRING	3	3
21	P80029	RETAINER, DOUBLE HOLE	3	3
22	P80012	SET SCREW, 10-24X1/2	6	6
23	P80014	CAPSCREW-M12 X 150MM	3	3
24	P80015	CAPSCREW M12 X 180MM	3	3
25	P60022	WASHER	7	7
26	P80019	SPACER TUBE	3	3
Ni.	P80006	ENGINE RETARDER HOUSING-P80A FRONT	1	0
Ni.	P80007	ENGINE RETARDER HOUSING-P80A REAR	0	1
Ni.	P80037	TUNE-UP KIT-P80A (SOLD SEPARATELY)		