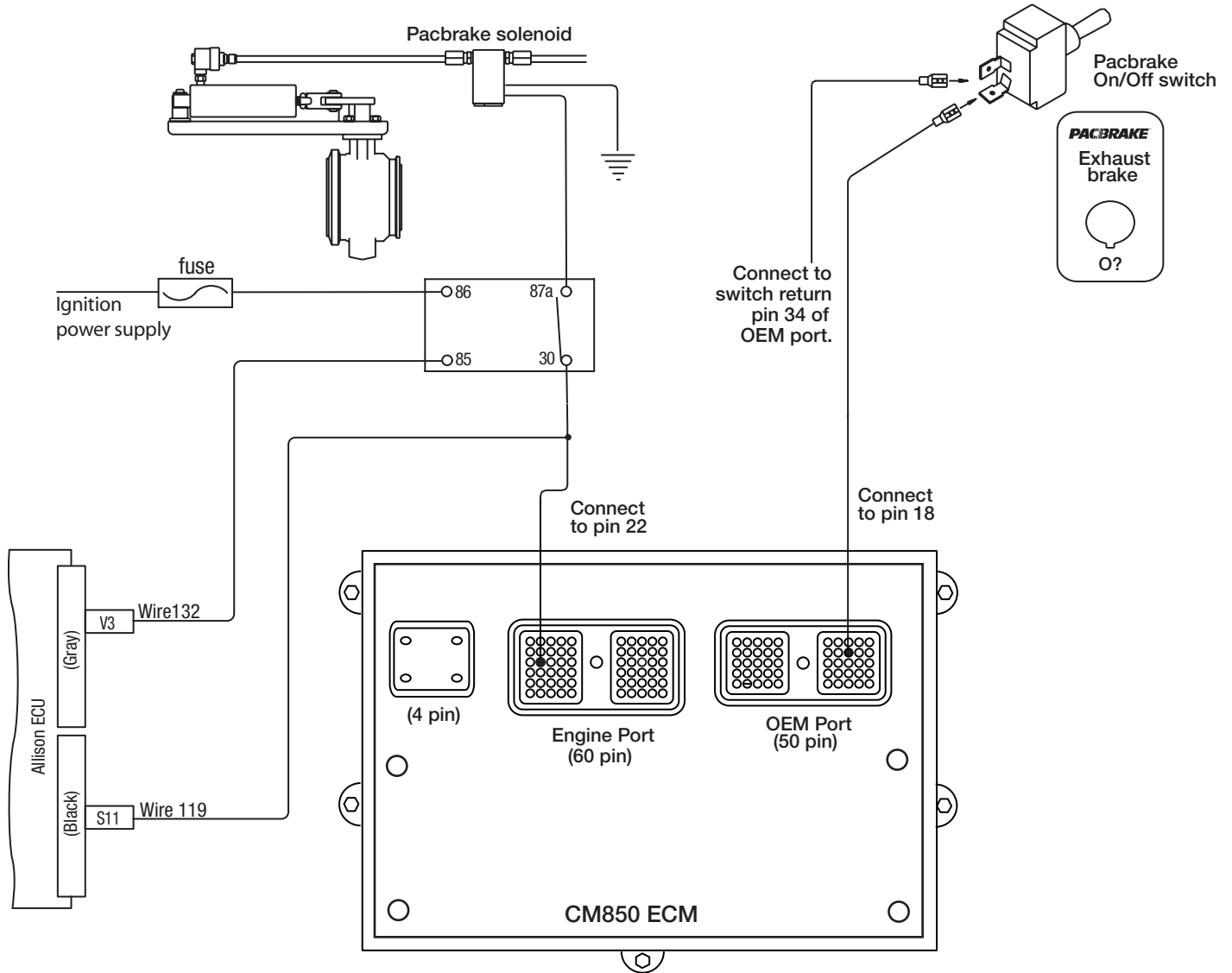


Pacbrake Exhaust Brake Wiring Schematic For:

CUMMINS ISB/ISC/ISL c/w CM 850 Electronic Control Module

On Vehicles: (WITH) Allison MD3060 WTEC III transmission (WITH or WITHOUT) ABS braking (WITH) on-board air system

Note: Do not use on vehicles equipped with Allison 4th Generation Transmissions, they are identified by one connector at the transmission ECU, consult Pacbrake factory



NOTE:

- Information for this schematic was derived from vehicle systems at the date of this printing.
- Updates or variations by vehicle manufacturers constituting changes will not be the responsibility of Pacbrake.
- Cummins Pin 22 is connected to a weather-pac connector at rear of cylinder head.