

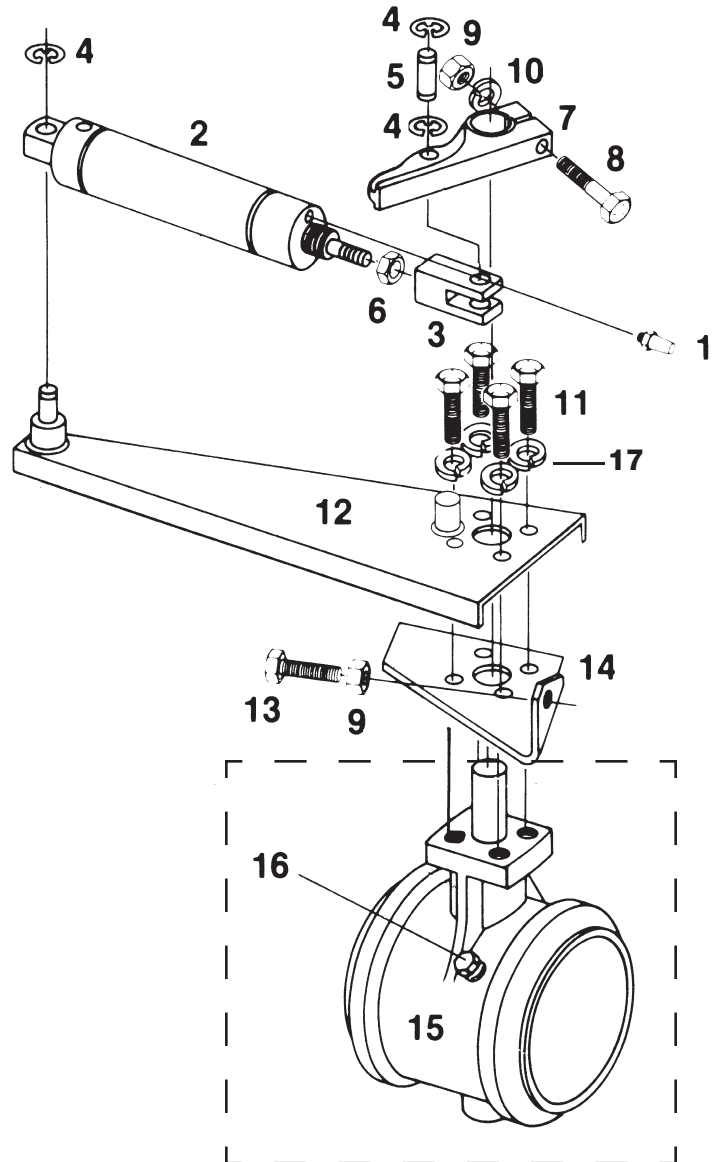


C10300 Exhaust Brake - 4" Inline

ILLUST. #	PART #	DESCRIPTION	QTY
1	C10833	Filter	1
2**	C11596	Cylinder - single	1
3	C10415	Clevis	1
4	C10420	E-clip	3
5	C10425	Clevis Pin	1
6	C10430	Locknut	1
7	C11600	Arm	1
8	C10441	Bolt-Arm	1
9	C10450	Nut	2
10	C10453	Washer	1
11	C10455	Capscrew	4
12**	C11597	Bracket	1
13	C10465	Screw-Stop	1
14	C10475	Bracket-Stop	1
15	C10355	Valve Body Inline	1
16	C11630	Plug-Hex	1
17	C10454	Washer	4

**Cylinder and bracket lengths may vary depending on brake serial number. Please record serial number and contact Pacbrake 800-663-0096.

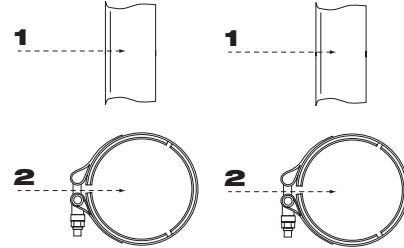
C10355 Valve body assembly includes housing, shaft and butterfly shown in dotted area



MOUNTING GROUP KITS / PARTS BREAKDOWN

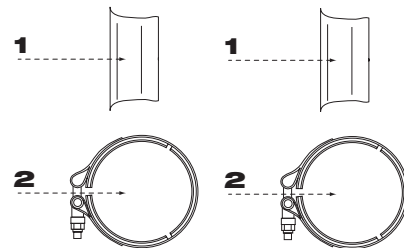
C11400 4" Inline Applications with a 4" Exhaust Pipe

ILLUST. #	PART #	DESCRIPTION	QTY
1	C11340	Adapter	2
2	C11350	Clamp	2



C11500 4" Inline Applications with a 4" Exhaust Pipe (Stainless)

ILLUST. #	PART #	DESCRIPTION	QTY
1	C11342	Adapter (SS)	2
2	C11350	Clamp	2



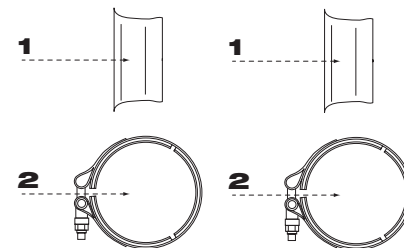
C11420 4" Inline Applications with a 3.5" Exhaust Pipe

ILLUST. #	PART #	DESCRIPTION	QTY
1	C11344	Adapter	2
2	C11350	Clamp	2



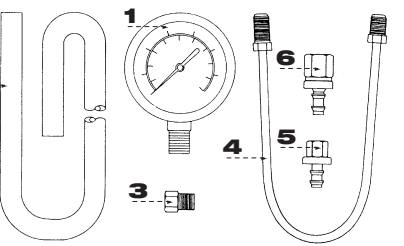
C11520 4" Inline Applications with a 3.5" Exhaust Pipe (Stainless)

ILLUST. #	PART #	DESCRIPTION	QTY
1	C11347	Adapter(SS)	2
2	C11350	Clamp	2



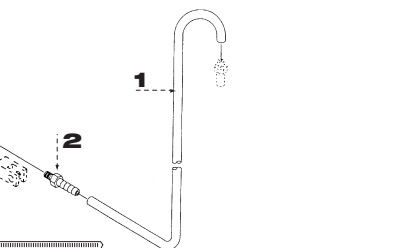
C11440 4" Inline Applications with a 3" Exhaust Pipe

ILLUST. #	PART #	DESCRIPTION	QTY
1	C11346	Adapter	2
2	C11350	Clamp	2



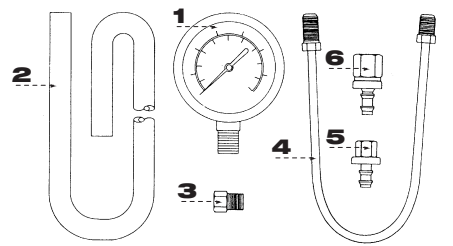
C11540 4" Inline Applications with a 3" Exhaust Pipe (Stainless)

ILLUST. #	PART #	DESCRIPTION	QTY
1	C11348	Adapter (SS)	2
2	C11350	Clamp	2



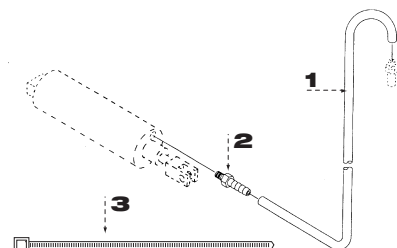
C10600 Exhaust Back Pressure

ILLUST. #	PART #	DESCRIPTION	QTY
1	C10650	Gauge	1
2	C10800	Hose	1
3	C10678	Fitting	1
4	C10677	Steel Tube	1
5	C10676	Fitting	1
6	C10775	Fitting	1



C11020 Remote Cylinder Filter

ILLUST. #	PART #	DESCRIPTION	QTY
1	C10687	Hose	1
2	C10686	Fitting	1
3	C11618	Tystrap	3



L1023.030904

Need to know more? ... Call 800-663-0096
or visit our website www.pacbrake.com

Pacbrake® and Direct Mount® are registered trademarks of Pacbrake Company. Other trademarks used herein are property of their respective holders. Printed in Canada.

PACBRAKE
ENGINE & EXHAUST BRAKES