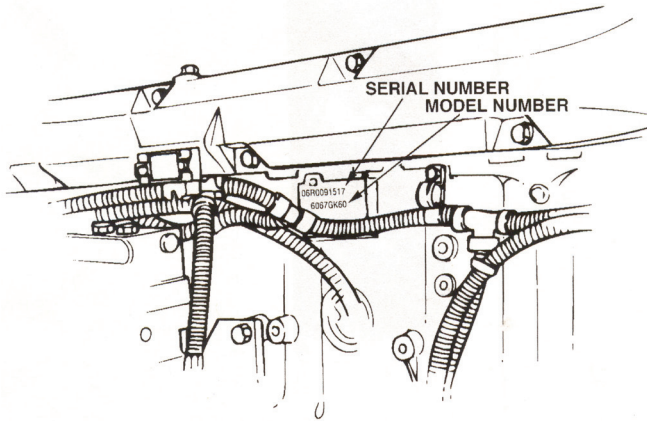


## PACBRAKE ENGINE BRAKE KITS FOR DETROIT DIESEL ENGINES

PACBRAKE Part #	DESCRIPTION	Retail Price US	Retail Price CDN
P18974	ENGINE BRAKE BASE KIT P-61 11.1L UP TO 1998 DDC S60-24V S/L	\$1,889.41	\$1,988.85
P29020	ENGINE BRAKE BASE KIT P-80 12.7L 2000 DDC S60-24V S/L	\$1,889.41	\$1,988.85
P30506	ENGINE BRAKE BASE KIT P-80A 12.7L 2001 DDC S60-24V S/L	\$1,889.41	\$1,988.85
P31361	ENGINE BRAKE BASE KIT P-80C 12.7L '02 to '06 DDC S60-12V S/L	\$1,834.38	\$1,930.93
P31860	ENGINE BRAKE BASE KIT P-80C 12.7L '02 to '06 DDC S60-24V S/L	\$1,889.41	\$1,988.85
P50001	ENGINE BRAKE BASE KIT P-50 12V S/L	\$1,513.12	\$1,592.75
P61001	ENGINE BRAKE BASE KIT P-61 11.1L UP TO 1998 DDC S60-12V S/L	\$1,952.70	\$2,055.48
P63009	ENGINE BRAKE BASE KIT P-63C 12.7L up to & including 1999 DDC S60-12V S/L	\$1,952.70	\$2,055.48
P63010	ENGINE BRAKE BASE KIT P-63C REMAN 12.7L up to & including 1999 DDC S60-12V S/L DDEC II ELECTRICAL	\$1,725.51	\$1,816.32
P63011	ENGINE BRAKE BASE KIT P-63C REMAN 12.7L up to & including 1999 DDC S60-12V S/L DDEC III ELECTRICAL	\$1,725.51	\$1,816.32
P80008	ENGINE BRAKE BASE KIT P-80 12.7L 2000 DDC S60-12V S/L	\$1,952.70	\$2,055.48
P80028	ENGINE BRAKE BASE KIT P-80A 12.7L 2001 DDC S60-12V S/L	\$1,952.70	\$2,055.48

**NOTE:** The Detroit Diesel engine brake kits listed above in some cases do include the under cover wiring. Please determine the DDEC version of the engine or call Pacbrake Customer Service with the engine model number to order the under cover wiring kit.

## DETROIT DIESEL SERIES 50/60 MODEL NUMBER IDENTIFICATION



Model Number	DDEC Version	Pacbrake	Control Group #
6067GT60	T = DDEC I	N/A	N/A
6067GU60	U = DDEC II	P61 / P63	P60150
6067GU60	U = DDEC II	P50	P50150
6067GK60	K = DDEC III	P80 / P80A	P80156
6067GK60	K = DDEC III	P61 / P63	P60155
6067GK60	K = DDEC III	P50	P50155
6067GK60	K = DDEC IV	P80 / P80A	P80156
6067GK60	K = DDEC IV	P61 / P63	P60155
6067GK60	K = DDEC IV	P50	P50155
6067GK6E	K = DDEC IV	P80C	P80158
6067GV6E	V = DDEC V	P80C ***	P80157
6067HG8E	G = DDEC VI	N/A	N/A

\*\*\*P80C - DDEC V engines do not contain the engine brake wiring harness. Unfortunately it is part of the injector harness. Therefore, the injector harness must be replaced when adding an engine brake. Pacbrake harness kit pn# P80157 must be ordered separately or DDC pn# 23536019 may be used.

**NOTE:** The model numbers above are samples only. Many variations exist.